



# Build *Her Up*

## *The Future of* Catherine House



Uniting to build the next chapter of Catherine House

The Future of  
Catherine House

Aubree

Jessica

Chloe

Matilda

Play *Your* Part

Charlotte

Harper

Rosemary

Naomi

Felicity

Belinda

Rachel

Aaliyah

Poppy

and Build *Her* Up

Alexis

Suzanne

Lina

# Overview

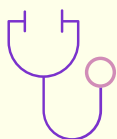
## *Catherine House*

Catherine House is South Australia's only homelessness and recovery service for women. Our aim at Catherine House is to end homelessness for every woman who walks through our doors – for good.

Catherine House deals with the immediate issues created by homelessness and assists women in planning a future that helps them sustain housing and financial security and build purposeful lives.

**Catherine House is so much more than a safe bed and a meal.**

Our support services include:



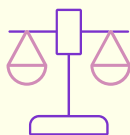
Health Services



Counselling Services



Mental Health & NDIS support



Financial & Legal Advice



Personal Development



Education & Employment

# Our Impact

## *in 2023*

### *Support Provided*

54 women were provided with safe and secure accommodation each night.

We provided 316,656 hours of support to clients in 2023.

Over 65,000 meals and snacks were served to the women we support, thanks to our partnerships with local businesses and our wider community.

We worked with 78 other agencies to ensure expert client support across all areas such as dental, legal and medical services.

Our case workers held 37,626 sessions with clients, including case management and intensive support.

### *Client Outcomes*

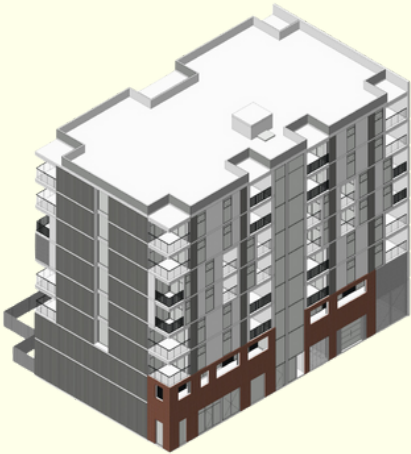
86% reported an improved sense of ability to achieve.

84% of clients reported improved interpersonal connections.

86% of clients reported an improvement in their living skills.

80% reported successfully navigating financial obligations by engaging in our services.

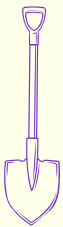
# All proceeds raised will support Catherine House: *New Generation*



- ✓ **New facilities**
- ✓ **Improved Safety**
- ✓ **Innovative service model**
- ✓ **Additional accommodation**
- ✓ **Supporting more south Australian women experiencing homelessness**

This project is a *once in a generation* renewal that will deliver *intergenerational value*.

Catherine House has been successful in securing an allocation of funding for a new crisis and longer-term accommodation service.



This project is  
*shovel  
ready*

Together with Housing Choices, we have an existing block of land, building plan and approval.

Your support this year will help us create this life-changing service, Catherine House: New Generation.

*More women will have access to vital crisis accommodation and trauma-informed recovery services in a single 24/7 operation, with overall places across Catherine House programs lifting from 60 to more than 76 safe places for women experiencing homelessness each night.*

**- Director, Julie Duncan**

# Trauma-informed & lived experience *architecture*

This project has been *strongly informed by the voices of women* who know what is needed - because they've accessed it themselves. Our *Lived Experience Research Report (2021)* captured the views of South Australian women who have experience utilising homelessness services.

The results of this research were the starting point for our planning to *create a trauma-informed facility* based on lived experience.



## On-site Women's Respite and *Recovery Centre*

The new Women's Centre will include:

- Staff sleepover unit for 24/7 support
- Large domestic kitchen for shared meals as required
- Computer training space
- Secure outdoor garden
- A large multi-purpose wellness space
- Dedicated education spaces
- Craft, cooking, & activity areas
- Restorative relaxation spaces
- Private 1:1 meeting rooms



## *Significant upgrades* to facilities and available services

Our current Crisis Accommodation building was built in 1987 and no longer meets contemporary accommodation expectations. Due to the existing layout and compliance issues, we are not currently able to offer services to women with children.

New Generation Catherine House will provide accessible independent living apartments that will be able to accommodate infants and children.



The *reimagining of women's crisis accommodation is a significant innovation* in this project, establishing a new model and standard for delivery of a *gendered response to homelessness*, addressing the *key drivers and impacts* of homelessness for women - domestic and family violence, trauma, poverty, mental health and well-being, physical health and disability.

332

in 2023, the waitlist for Catherine House's crisis Accommodation service totalled **three hundred and thirty-two women.**

Help us support more women.

**Unmet need is on the rise.** Over 50% of women enter our service as a direct result of family and domestic violence incidents, and *over 74% report family and domestic violence as a primary cause* of their original loss of permanent home.



Catherine House is committed to raising *\$2.5 million dollars* through corporate and *community support and philanthropy* to build this vital South Australian service.



**\$2.5 million**

*Can you help us?*

I was able to grow in  
there.

*Everything* we  
do is about  
building her up.

I'm able to feel  
safe again.

# Uniting to build *the next chapter* of Catherine House.

*We are now looking for individuals and organisations to support the New Generation Catherine House. For a confidential discussion or to chat further about the project, please contact:*

**Jaylee Cooper**

Manager of Philanthropy & Engagement

[Jayleec@catherinehouse.org.au](mailto:Jayleec@catherinehouse.org.au)

0403 322 703

*Together, we can help build her up.*



@CatherineHouseAdl